



# MERCHANDISING MANUAL 2023



**FIERA MILANO BRASIL**



Dear Exhibitor,  
Be welcome!

Our events come to exceed expectations by showing the evolution of the market, which today seeks innovation, high technology and solutions with extreme efficiency.

Adding possibilities for exhibitors to stand out and increase their visibility before visitors, the Merchandising Catalog offers a series of options that fit the most diverse demands of the company.

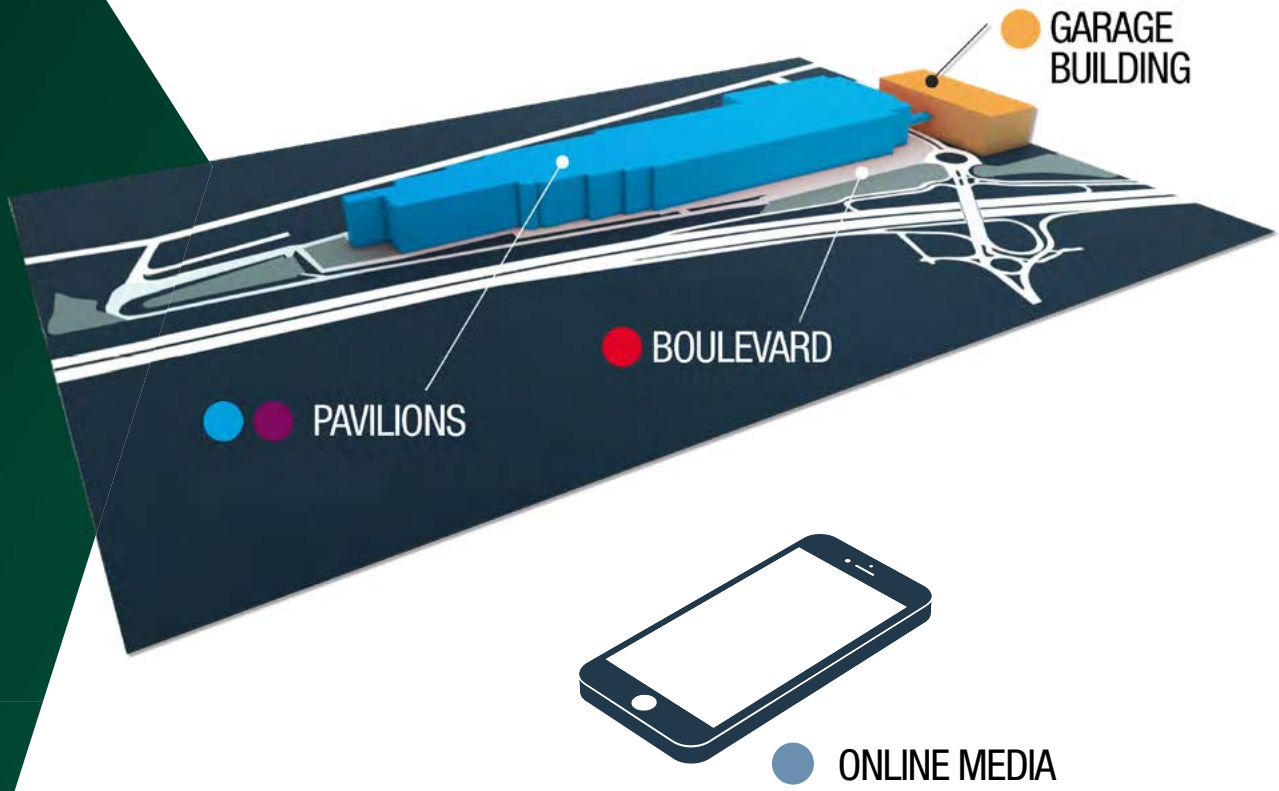
The communication and marketing tools present in this Manual can increase your results and optimize your participation in our fairs, aiming to increase the number of visitors to your stand with the objective of generating business.

Fiera Milano Brasil events are the best opportunity to showcase your solutions to a qualified audience, with final decision-making power.

Check out the existing opportunities in the Merchandising Catalog for your company to stand out even more.

Fiera Milano Brasil Team

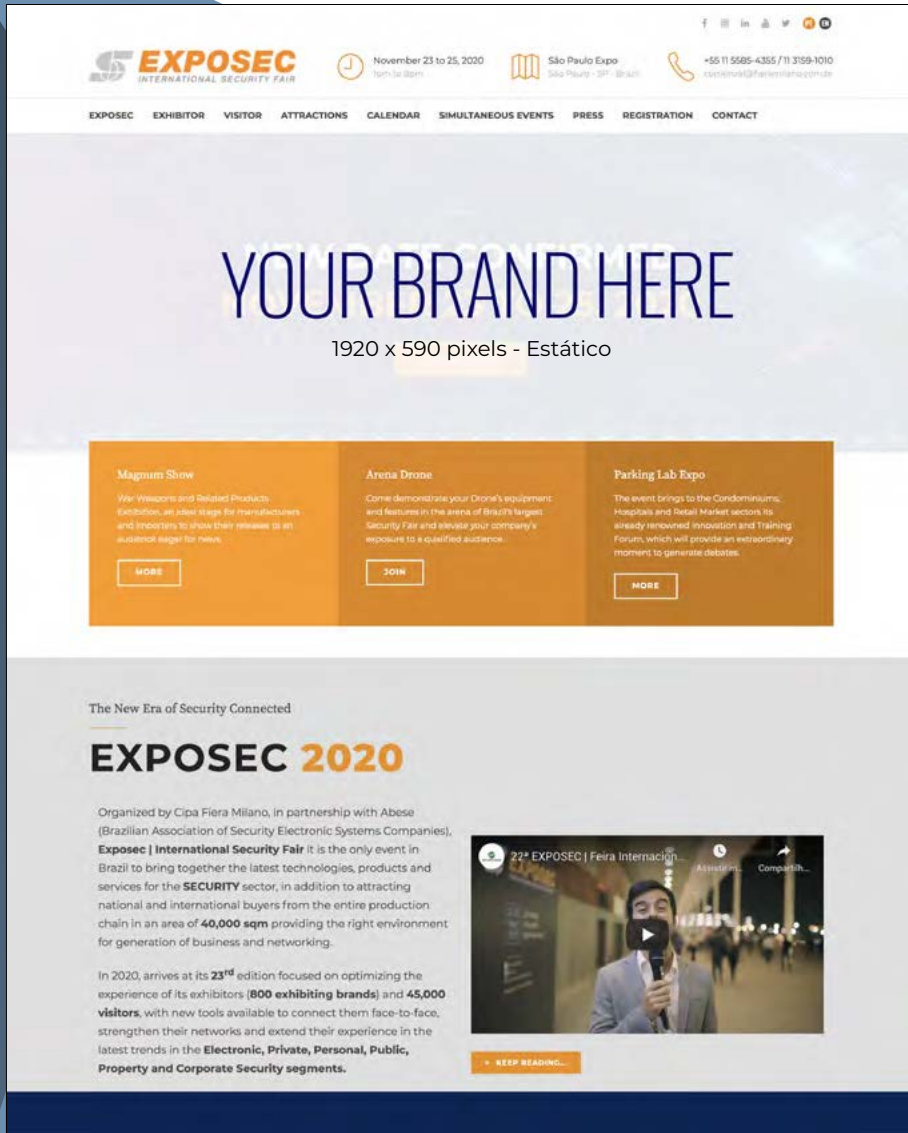
# CONTENTS



Online Media	4
Pavilions - Printed Media	12
Pavilions - Digital Media	41
Boulevard - External Area	44
Garage Building	53

# ITEM 1

## BANNER - WEBSITE



**DESCRIPTION**  
 – Static banner on the fair’s website.

**SPECIFICATIONS**  
 – 1920 x 590 pixels;  
 – File in JPEG, PNG or GIF;  
 – Period: Monthly.

**QTY**  
 – On request.

**US\$ 1,500.00**  
 one insertion

Impact



# ITEM 2



## E-MAIL MARKETING – BANNER

### DESCRIPTION

– Banner within the email marketing of the fair.

### SPECIFICATIONS

- 600 x 80 pixels;
- File in JPEG, PNG or GIF;
- Limited number of sending.

# US\$ 1,500.00

one banner

Impact



# ITEM 3

## E-BLAST

### DESCRIPTION

- Use this direct marketing tool to improve the results of your company. It can be a simple information, sale, notice, electronic information, among other purposes that can generate great results.

### SPECIFICATIONS

- Maximum width 600 pixels;
- HTML file;
- Maximum file size: 100Kb;
- Client must inform response email and subject.



# US\$ 1,500.00

one sending

Impact



# ITEM 4

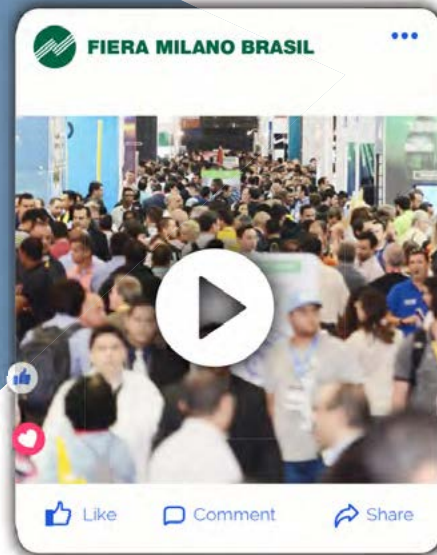
## POST ON SOCIAL MEDIA FACEBOOK / INSTAGRAM / LINKEDIN

### DESCRIPTION

- Post on fair's social media.
- Increase the interaction between target audience and brand.

### SPECIFICATIONS

- Post with image or video
- Measurement: 800 x 800 pixels;
- Image Format: PNG;
- Video Format: MP4;
  
- Post with image and link
- Measurement: 1200 x 628 pixels;
- Image Format: PNG;



**+34K\***  
followers

**+37K\***  
page and  
profile visits

**+540K\***  
of range.

**US\$ 1,500.00**

one post

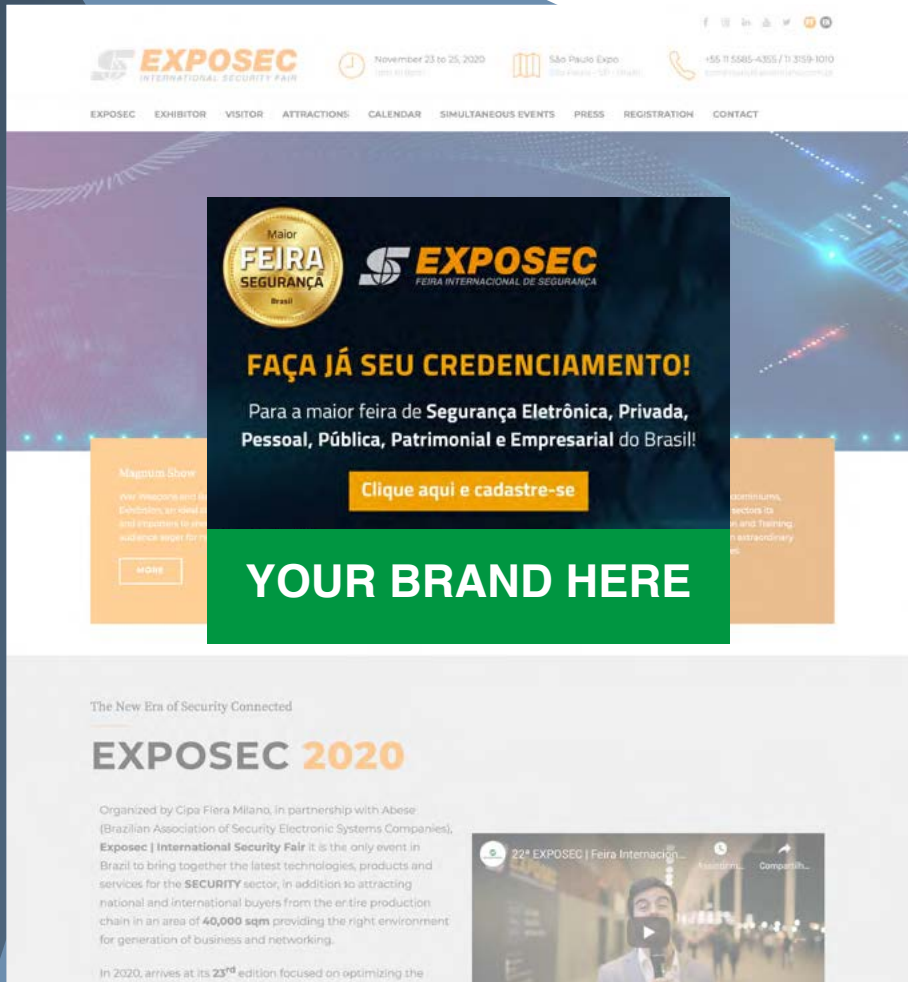
Impact



# ITEM 5

## WEBSITE – POP-UP

DESCRIPTION  
– Accreditation Pop-Up Ad.



# US\$ 1,500.00

one post

Impact





# ITEM 6

## EXHIBITOR MOVIE

### DESCRIPTION

Promote your company at the event by producing an exclusive video by our team. Disclosure in our channels: E-mail Marketing, Social Networks (Facebook / Instagram / LinkedIn) and Website.

**EXPOSEC**  
FEIRA INTERNACIONAL DE SEGURANÇA

SOBRE A FEIRA | QUEM VISITA | LISTA DE EXPOSITORES | EVENTOS SIMULTÂNEOS | AGÊNCIA DE VIAGENS | **FAÇA JÁ SEU CREDENCIAMENTO**

### SOLUÇÕES TECNOLÓGICAS E INOVAÇÕES NA EXPOSEC!!

A FAAC Group é uma empresa italiana, líder mundial no mercado de segurança perimetral e estará mais uma vez na Exposec apresentando seus lançamentos e tecnologias para esse setor.

*"A Exposec é a feira mais importante da América Latina. É o melhor lugar para ter um termômetro do que está acontecendo na indústria".*

**Matteo Biliotti, Diretor Comercial da Indústrias Rossi/Faac Group.**



**EXPOSEC**  
FEIRA INTERNACIONAL DE SEGURANÇA

São Paulo Expo  
São Paulo - SP - Brasil  
(11) 5585-4365 / (11) 3359-1010  
comercial@exposc.com.br

EXPOSEC | EXPOSITOR | VISITANTE | ATRAÇÕES | PROGRAMAÇÃO | EVENTOS SIMULTÂNEOS | IMPRENSA | CREDENCIAMENTO

### O QUE OS EXPOSITORES FALAM SOBRE A EXPOSEC:

Confira alguns depoimentos dos expositores que participaram das últimas edições da maior feira de segurança do Brasil.

Video player showing a testimonial from Rafaela Silva, Director of Solutions at WDC. The player includes a play button, navigation arrows, and a volume icon.

**Exposec**  
17 de dezembro de 2019 · 🌐

Rafaela Silva, diretora de soluções da WDC convida a todos para estarem na Exposec 2020. Segundo ela, as novidades para o ano que vem serão as soluções de automação e eficiência energética, portaria virtual e segurança de perímetros.

Video thumbnail showing Rafaela Silva, Director of Solutions at WDC, speaking at a desk.

# US\$ 2,500.00

+ expense of travel/accommodation by the exhibitor

Impact



# ITEM 7



## APP FIERA MILANO BRASIL

### DESCRIPTION

With our App you have contact all year round with visitors to our events. Targeted and qualified audience that will have access to your exclusive content before, during and after the event.

**US\$ 1,500.00**

1 post for all App users

Impact



# ITEM 8

[www.revistacipa.com.br](http://www.revistacipa.com.br)

## MAGAZINE WEBSITE

### DESCRIPTION

Accompanying the digital growth, the magazines Cipa & Incêndio, and Security, present the new version of their portal completely reformulated, with intuitive layout, interactive design and the most important news about the sector.

Promote your brand and / or product to a qualified audience by adding exposure to your participation in our events.

[www.revistasecurity.com.br](http://www.revistasecurity.com.br)

[www.revistaincendio.com.br](http://www.revistaincendio.com.br)

## DOWNLOAD FULL MEDIA KIT

[CIPA MAGAZINE - Click here](#)

[SECURITY BRAZIL - Click here](#)

[INCÊNDIO MAGAZINE - Click here](#)

# ITEM 9

## EXHIBITOR PAGE



### DESCRIPTION

The EXHIBITOR PAGE is a dedicated page for each exhibitor to expand their participation in EXPOSEC. This space generates the opportunity for relationship and networking with the main players in the market, enables the prospection of new customers, in addition to increasing the visibility of the brand. It is an excellent opportunity to present a portfolio, launch new products/services, build your network of contacts with a highly qualified visitor and with the main leaders of the sector.

### SPECIFICATIONS

- 1 Super Banner: 970x250 pixels | **png, jpg or gif** file
- 1 Company logo: 180x180 pixels | **png, jpg or gif** file
- Street information and location of your stand
  - Link to Social Networks: **LinkedIn / Facebook / Instagram / Twitter / Youtube**
  - Company contact details: **Corporate Name/Finance Name/Phone/E-mail/Website**
  - Brief description of the company
- 1 Product Catalog (**PDF file | File size: 2MB**)
  - 1 Company or product video
- 5 Product Photos | **File in JPG or PDF**
  - Brief description of products

**+176K**  
De usuários navegando no site.

Acesso em **+de 150** países

**+783K**  
De visualizações de página na campanha de 2022.

Impact



**US\$ 1,800.00**

Information and parts must be provided by the customer.  
Airing from contract signing up to 30 days after the event

# ITEM 1

## OFFICIAL FAIR CATALOGS - AD

### DESCRIPTION

- Advertise in the catalogs that will be distributed free to visitors and exhibitors during the days of the event.

### SPECIFICATIONS

- Measurement: 15.5x23cm (WxH);
- Cover: matte coated paper 170gr;
- Core: matte coated paper 90gr;
- Send file in PDF or JPG with 300dpis + 0.5cm of sides excess.

### PRINTING RUN

- Consult our commercial team.



Impact



**US\$ 1,000.00**

1 page

# ITEM 2



## OFFICIAL FAIR MAGAZINES\*

### DESCRIPTION

- Free distribution at the fair;
- Special post-event material with coverage of the event.

### SPECIFICATIONS

- Format: 21x28cm (WxH);
- Cover: matte coated paper 170gr with UV varnish;
- Core: matte coated paper 90gr;
- Send file in PDF or JPG with 300 dpis + 0,5cm bleed.

### PRINTING RUN

- Cipa & Incêndio Magazine (6 issues / year);

\* Fisp / Fire Show Fairs

**CONSULT OUR  
COMMERCIAL TEAM**

Impact



# ITEM 3

## MODEL 1



## POCKET MAP

### DESCRIPTION

- Pocket map with plant and list of exhibitors;
- Distributed free of charge during event days.

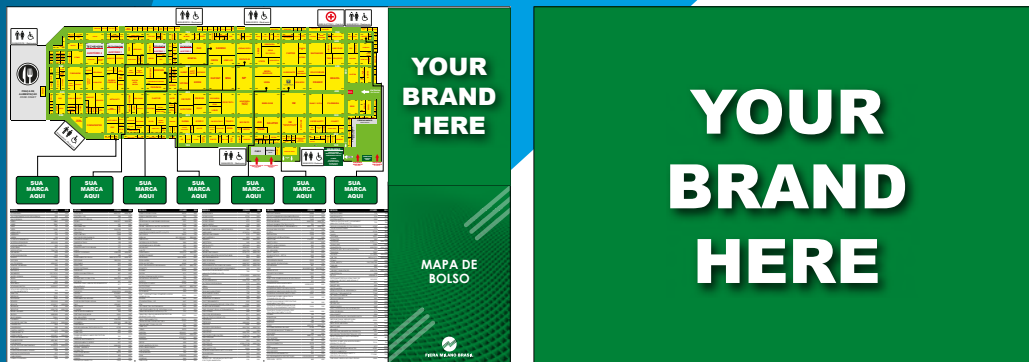
### SPECIFICATIONS





- Open format: 62x44 cm (WxH);
- Closed Format: 15.5x22 cm (WxH);
- Coated gloss paper 115g.
- Files according to space reserved, sent in PDF or JPG 300 dpis.

### PRINTING

- Consult our commercial team.

## MODEL 2



MODEL 1	INVESTIMENT
Cover back: 15,5x22cm	US\$ 2,088.00
1 module: 15x14,5cm 	US\$ 1,800.00
2 modules: 30x14,5cm 	US\$ 3,312.00
3 modules: 45x14,5cm 	US\$ 4,752.00
4 modules: 60x14,5cm 	US\$ 6,048.00

MODEL 2 - EXCLUSIVE	INVESTIMENT
Cover back: 15,5x22cm + Total ad on back: 62x44cm	US\$ 6,048.00

Impact



# ITEM 4

## AISLE BANNER

### DESCRIPTION

- Aerial banner signaling the streets of the fair with its logo or art;
- Front/back.

### SPECIFICATIONS

- Banner measurement: 1.50x2.5m (WxH);
- Art measurement: 1.50x0.80m (WxH);
- PDF or JPG file with 120 dpis in art measurement;
- Printed on Canvas.

### QTY

- On request.

**US\$ 1,080.00**

the unit (front / back)



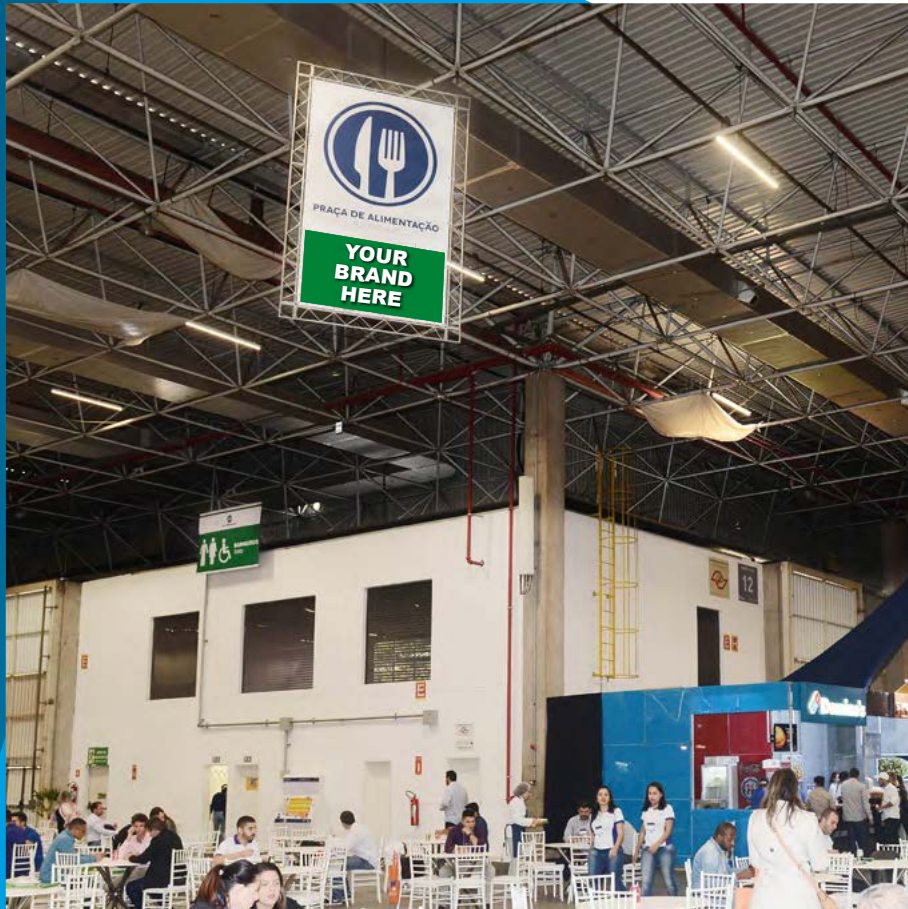
Impact





# ITEM 5

## BANNER OVER FOOD COURT



### DESCRIPTION

- Banner hung signaling the food court with its logo or art
- Front/back.

### SPECIFICATIONS

- Banner measurement: 1.50x2.5m (WxH);
- Art measurement: 1.50x0.80m (WxH);
- PDF or JPG file with 120 dpis in art measurement;
- Printed on Canvas.

### QTY

- On request.

**US\$ 1,080.00**

the unit (front / back)

Impact



# ITEM 6

## AERIAL BANNER OVER THE STAND



### DESCRIPTION

- Banner hung above the booth in the structure of the pavilion;
- Production and finishing is the responsibility of the customer;
  - Installation of the promoter;
- Delivery of the banner in the Caex on the 1st day of assembly.

### SPECIFICATIONS

- Banner measurement: 2x3m or 3x2m (WxH).
- Finishing of bag and barrel / baton at the ends;

### QTY

- 1 unit per stand.

**US\$ 1,080.00**

produced by the client and installed by the promoter

**US\$ 2,250.00**

produced by the client and installed by the promoter (customer supplies art)

Impact



# ITEM 7

## TOTEM 80

### DESCRIPTION

- Totem with two exclusive faces of the exhibitor located at the intersection of the corridors of the fair;
- Art provided by the client;
- Production and installation of the promoter.

### SPECIFICATIONS

- Total Measurement: 0.80x1.80 m (WxH).
- Art View Area: 0.80 x 1.60 m (WxH).
- PDF or JPG file with 120 dpis in art measurement;

### QTY

- On request.



**R\$ 1,080.00**

the unit (front / back)

Impact



# ITEM 8

## TOTEM 120

### DESCRIPTION

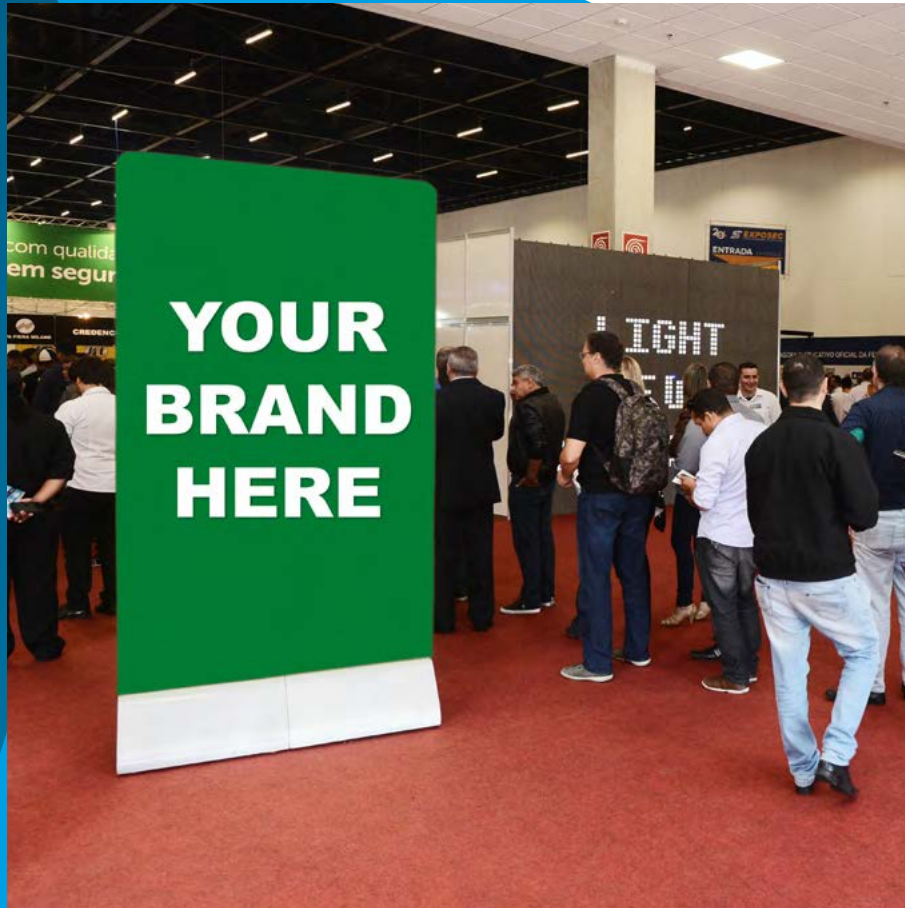
- Totem with two faces exclusive to the art of the exhibitor located at the entrance of the accreditation or in the entry hall;
  - Art provided by the client;
  - Production and installation of the promoter.

### SPECIFICATIONS

- Total Measurement: 1.20 x 2.40 m (WxH).
  - Area of Vision: 1.20 x 2.20 m (WxH).
- PDF or JPG file with 120 dpis in art measurement;

### QTY

- 1 unit.



**R\$ 2,280.00**

the unit (front / back)

Impact



# ITEM 9

## LOGO IN THE PRINTED PLANT

### DESCRIPTION

- Your logo indicating the location of the booth in the entrance plan and in the totems plant inside the fair located in strategic locations;
  - Logo file provided by the customer;
  - Production and installation of the promoter.

### SPECIFICATIONS

- Vectorized logo file (curve) in EPS or PDF format.

### QTY

- 1 unit.

**US\$ 750.00**

the unit



Impact



# ITEM 10

## GIANT FLOOR STICKER

### DESCRIPTION

- Special floor sticker, with the art of the exhibitor.
- Art provided by the client;
- Production and installation of the promoter.
- Applied at the accreditation or the entrance hall of the fair.

### SPECIFICATIONS

- 4x4 m (WxH);
- PDF or JPG file with 120 dpis in art measurement;

### QTY

On request.



**US\$ 2,280.00**

the unit

Impact



# ITEM 11



## MEDIUM FLOOR STICKER

### DESCRIPTION

- Special floor sticker, with the art of the exhibitor.
- Applied in the corridors inside the fair;
  - Art provided by the client;
- Production and installation of the promoter.

### SPECIFICATIONS

- 2.80x2.80 m (WxH);
- PDF or JPG file with 120 dpis in art measurement;

### QTY

- On request.

**US\$ 1,140.00**

the unit

Impact



# ITEM 12

## SMALL FLOOR STICKER

### DESCRIPTION

- Special floor sticker, with the art of the exhibitor.
- Applied in the corridors inside the fair;
- Art provided by the client;
- Production and installation of the promoter.

### SPECIFICATIONS

- 1.40x1.40 m (WxH);
- PDF or JPG file with 120 dpis in art measurement;

### QTY

- On request.



**US\$ 720.00**

the unit

Impact





# ITEM 13

## SAMPLING

### DESCRIPTION

- Distribution of promotional material at the entrance or exit of the event as: bags, gifts, pens, among others.

### SPECIFICATIONS

- Content under evaluation of the direction of the fair;
- All production of materials on behalf of the exhibitor.

### QTY

- On request.



**US\$ 3,600.00**

Impact



# ITEM 14

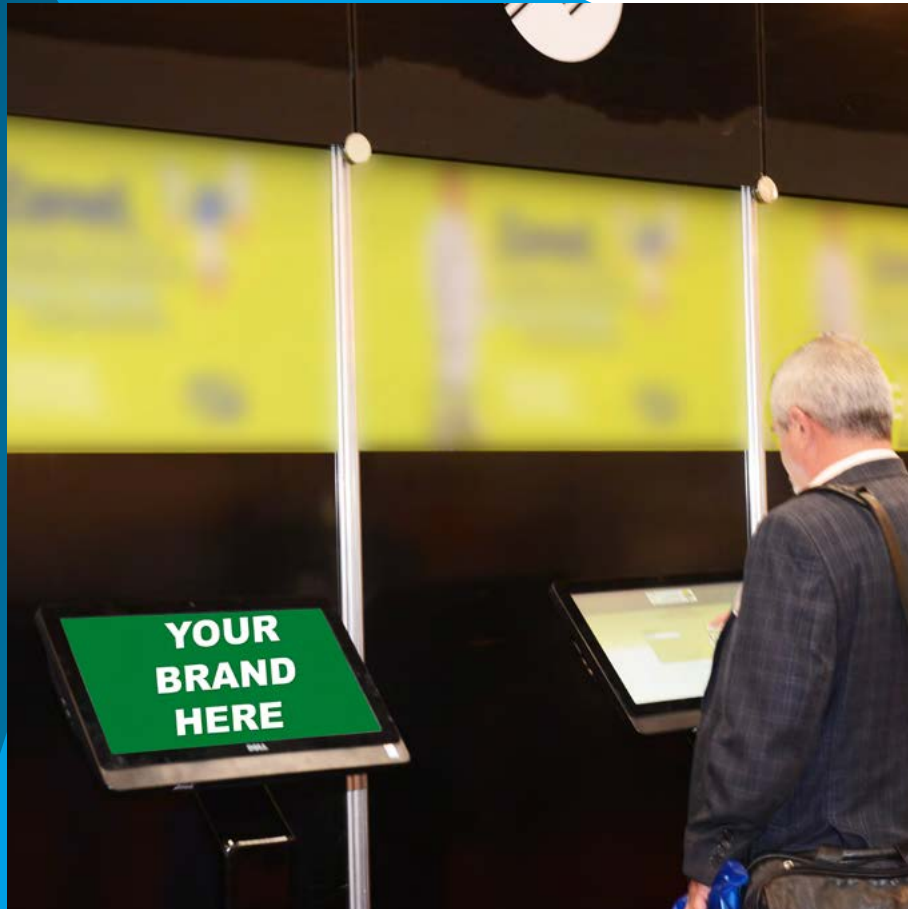
## ACCREDITATION TOTEM

### DESCRIPTION

- Your logo or art on the wallpaper of the self-service totems;
- Logo or art provided by the client;
- Installation by the developer.

### QTY

On request.



# US\$ 1,440.00

Impact



# ITEM 15

## VIP VISITOR BADGE - ADVANCED ACCREDITATION

### DESCRIPTION

- Exposure of your brand on badges sent to visitors by post office, that are registered in advance at the fair through the website.
- If you want to have the sponsored lanyard, the exhibitor will be responsible for the production and delivery of clip strings.

### SPECIFICATIONS

- Badge format 10x12cm (WxH);
- Space for application of the logo: 9x2cm (WxH);
- Vectorized log file (curve) in EPS or PDF formats;
- The promoter is responsible for printing and distributing badges.

### QTY

- 1 quota = 10 thousand badges;
- No limit of quotas;

**US\$ 10,296.00**

quota of 10 thousand badges



Impact



# ITEM 16

## VISITOR BADGES - LOCAL ACCREDITATION



### DESCRIPTION

- Expose your brand on visitor badges during the event.
- If you want to have the sponsored lanyard, the exhibitor will be responsible for the production and delivery of clip strings.

### SPECIFICATIONS

- Badge format 10x12cm (WxH);
- Space for application of the logo: 9x2cm (WxH);
- Vectorized log file (curve) in EPS or PDF formats;
- The promoter is responsible for printing and distributing badges.

### QTY

- 1 quota = 10 thousand badges;
- Limited quotas

**US\$ 7,200.00**

quota of 10 thousand badges

Impact



# ITEM 17

## PRESS ROOM

### DESCRIPTION

- Notepad;
- Pen with the brand;
- Brand in the Monitors;
- Logo / art on the walls 1.00x0.50 m (WxH).

### QTY

- Production and installation of stickers by the promoter, customer will need to provide file with the art / logo;
- Exhibitor will be responsible for the production and delivery of the rest of the materials.

**US\$ 1,440.00**



Impact



# ITEM 18



## LOGO ON ACCREDITATION BEHIND THE SERVICE AREA

### DESCRIPTION

- Application of the mark on the wall behind the attendant in the internal area, may be printed on sticker or canvas.

### SPECIFICATIONS

- Measurement: 1.00x0.50 m (WxH);
- The promoter is responsible for the production and application;
  - Exhibitor must provide file with art or logo.
- PDF or JPG file with 120 dpis in art measurement;

### QTY

- Minimum of 5 stickers

## US\$ 2,100.00

Minimum package with 5 stickers  
Additional **US\$ 600.00**

Impact



# ITEM 19



## LOGO ON ACCREDITATION RECEPTION DESK

### DESCRIPTION

– Application of the brand at the reception desk.

### SPECIFICATIONS

- Measurement: 1.00x0.50 m (WxH);
- The promoter is responsible for the production and application;
  - Exhibitor must provide file with art or logo.
- PDF or JPG file with 120 dpis in art measurement;

### QTY

– Minimum of 5 stickers

## US\$ 2,100.00

Minimum package with 5 stickers  
Additional **US\$ 600.00**

Impact



# ITEM 20



## AERIAL BANNER - \* ACCREDITATION FRONT

### DESCRIPTION

- Aerial banner above the accreditation;
- Front.

### SPECIFICATIONS

- Banner Measurement: 20x1,5 m (WxH);
- Printed on Canvas;
- The promoter is responsible for the production and installation;
- Exhibitor must provide file with art.
- PDF or JPG file with 120 dpis in art measurement;

### QTY

- 1 unit.

*\* Available to Exposec / Fisp / Fire Show*

# US\$ 15,000.00

Impact





# ITEM 21

## AERIAL BANNER - \* ACCREDITATION SIDE

### DESCRIPTION

- Aerial banner above the accreditation totems;
- Front.

### SPECIFICATIONS

- Banner Measurement: 15x1.5 m (WxH);
- Printed on Canvas;
- The promoter is responsible for the production and application;
- Exhibitor must provide file with art.
- PDF or JPG file with 120 dpis in art measurement;

### QTY

- 1 unit

\* Available to Fisp / Fire Show



# US\$ 12,000.00

Impact



# ITEM 23

## LOUNGE MOBILE CHARGER



### DESCRIPTION

– Associate your brand and your product with the technology most used for smartphones. It has several charging points + seat.

### SPECIFICATIONS

- Your logo / art in the placeholders;
  - A: 3.85x0.70m (WxH);
  - B: 0.30x0.60 m (WxH);
- Promoter is responsible for production and installation;
  - Exhibitor must provide file with art or logo.
  - PDF or JPG file with 120 dpis in art measurement;

### LOCATION

– At strategic points inside the fair.

### QTY

– On request

# US\$ 2,640.00

1 unit

Impact



# ITEM 25

## ENTRANCE HALL



### DESCRIPTION

- Your brand displayed in the hallway that gives access to the entrance of the fair.

### SPECIFICATIONS

- **Module A:** up to 4 units, measurement: 10.0x3.0m (WxH);
- **Module B:** 1 unit, measurement: 5.0x3.0m (WxH);
- **Module C:** 1 unit, measurement: 18.0x3.0m (WxH);
- Canvas printing and finishing in boxtruss / enveloped tranel;
- The promoter is responsible for the production and assembly, the exhibitor must provide file with art.
- PDF or JPG file with 120 dpis in art measurement;

### QTY

- On request.

Module A - 10x3m



Module B - 5x3m



Module C - 18x3m



**A- US\$ 9,000.00**

each module 10x3m

**B- US\$ 6,000.00**

module 5x3m

**C- US\$ 15,000.00**

module 18x3m

Impact



# ITEM **26**



## FOUR-SIDED TOTEM 80

### DESCRIPTION

- Expose your brand in a piece that will have wide vision inside the fair.

### LOCATION

- Entrance (next to the accreditation) or food court.

### SPECIFICATIONS

- 4 faces;
- Each face measures 0.8m x 2.0m (WxH);
- Art provided by the client;
- Production and installation of the promoter.
- PDF or JPG file with 120 dpis in art measurement;

### QTY

- Maximum of 6 units.

**US\$ 1,260.00**

1 unit

Impact



# ITEM 29

## TOTEM GEL ALCOHOL DISPENSER

### DESCRIPTION

– Structure showing your brand with alcohol gel dispenser.

### LOCATION

– Entrance of the event and strategic points of the fair.

### SPECIFICATIONS

- One side;
- Production and installation of the promoter;
- PDF or JPG file with 120 dpi in art measurement.

### QTY

– On request.



Impact



# US\$ 1,250.00

1 unit

# ITEM 3



## AERIAL PANEL 2 - EYELET

### DESCRIPTION

- Your brand displayed on the panels of the corridor of the pavilions that is happening the event;
- Front/back.

### SPECIFICATIONS

- Measurement: 5.00x5.00m (WxH);
- Art Measurement: 5.00x5.00m (WxH);
- PDF or JPG file with 120 dpis in art measurement;
- Printed on canvas and stuck in structure.

### QTY

- Consult our team.

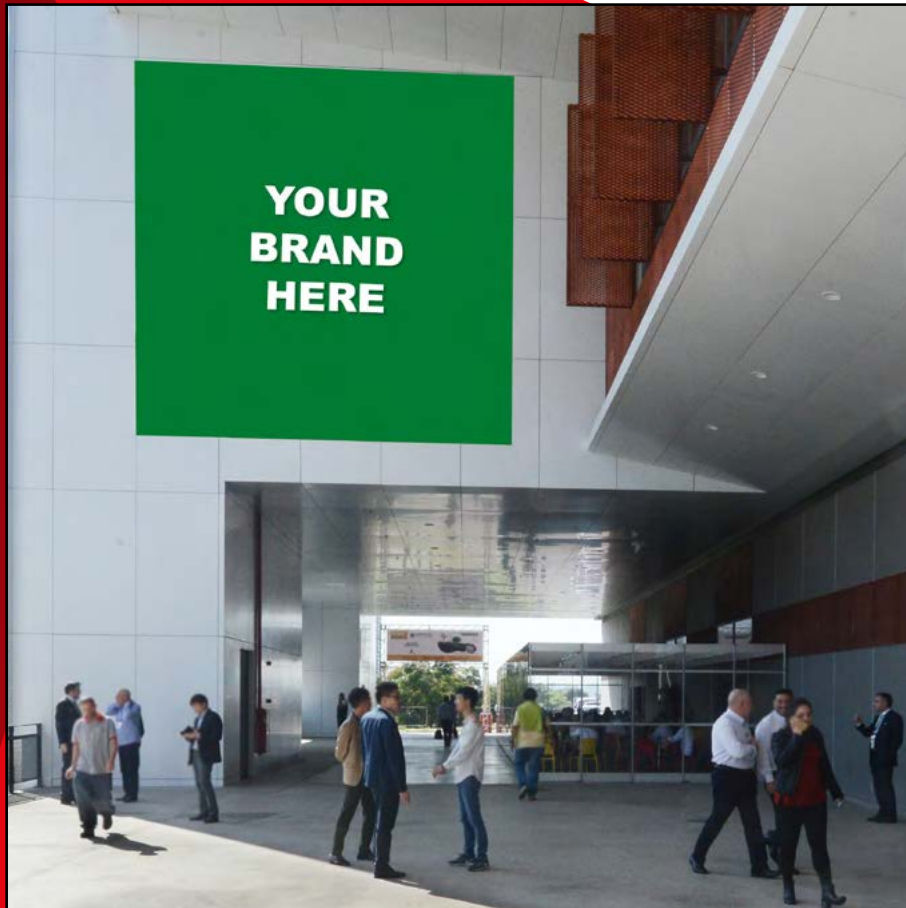
**US\$ 9,438.00**

1 unit

Impact



# ITEM 4



## EXTERNAL WALL STICKER\*

### DESCRIPTION

- Sticker with the art of the exhibitor applied in the external area of the pavilion giving visibility to who enters the fair;
- Art provided by the client;
- Production and installation of the promoter.

### SPECIFICATIONS

- Total sticker measures 6.5m x 6.5m (WxH).
- PDF or JPG file with 120 dpis in art measurement;

*\* Available to Exposec / Reatech / Fisp / Fire Show / Tubotech / wire South America*

# US\$ 12,650.00

1 module

Impact



# ITEM 5

## ESCALATOR\*

### DESCRIPTION

- Your brand exposed on the outside of the escalator;
- Front.

### SPECIFICATIONS

- Measurement: 12.10x0.55m (WxH);
- Art Measurement: 12.10x0.55m (WxH);
- PDF or JPG file with 120 dpis in art measurement;
- Printed on sticker.

### QTY

- 1 unit;



# US\$ 7,700.00

1 unit

Impact





# ITEM 7

## SAMPLING

### DESCRIPTION

- Distribute gifts and promotional materials in the external area of the fair entrance;
- The contracting of promoters, confection and distribution of materials are the responsibility of the exhibitor.

### QTY

- Up to 5 quotas (1 promoter per quota).



**US\$ 5,000.00**

1 quote

Impact



# ITEM 8

## RAIL



### DESCRIPTION

- Your brand displayed on the rail of the pavilion's corridors that is happening the event;
- Front/back.

### SPECIFICATIONS

- Pavilion 1 (1st mod): 65.0x0.70m (WxH);
- Pavilion 1 (2nd mod): 128.0x0.50 (WxH);
- Pavilion 2: 41.50x0.70 (WxH);
- Pavilion 3: 48.0x0.70 (WxH);
- Pavilion 4: 21.20x0.70 (WxH);
- PDF or JPG file with 120 dpis in art measurement;
- Printed on canvas and stuck in structure.

### QTY

- On request.

**PAV1 (1<sup>ST</sup> MÓD.): US\$ 4,840.00**

**PAV1 (2<sup>ND</sup> MÓD.): US\$ 6,655.00**

**PAV2: US\$ 3,146.00**

**PAV3: US\$ 3,630.00**

**PAV4: US\$ 1,573.00**

Impact



# ITEM 9

## VEHICLE EXHIBITION



### DESCRIPTION

– Display your customized vehicle in the outside area of the pavilion;

### QUANTITY AND SITE

– On request.

**CARRO: US\$ 7,260.00**

**VANS: US\$ 10,890.00**

**CAMINHÃO P: US\$ 14,520.00**

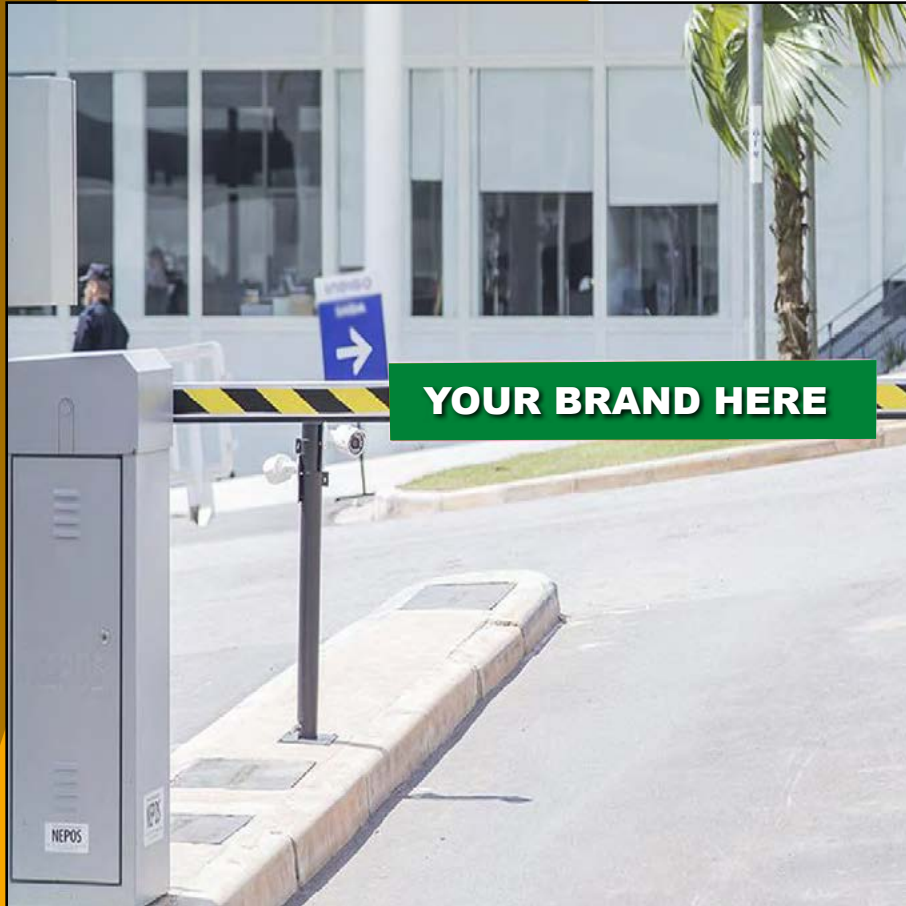
**CAMINHÃO G: US\$ 18,150.00**

Impact



# ITEM 1

## GATE



### DESCRIPTION

- Your brand just at the entrance of the parking lot of the garage building;
- Front.

### SPECIFICATIONS

- Measurement: 1.20x0.15m (WxH);
- Art measurement: 1.20x0.15m (WxH);
- PDF or JPG file with 120 dpis in art measurement;
- Printed on PS board.

### QTY

- Quota 1: Entrance with 10 gates;
- Quota 2: Exit with 6 gates;

**QUOTA 1- US\$ 3,388.00**

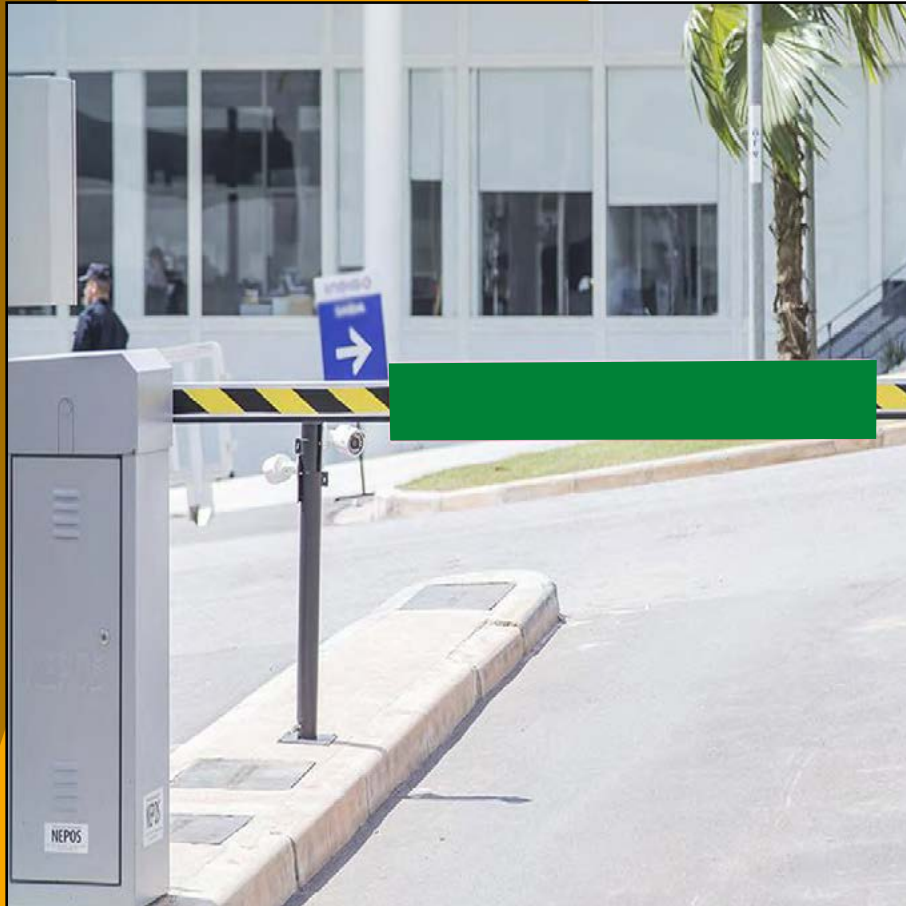
**QUOTA 2- US\$ 2,178.00**

Impact



# ITEM 2

## GATE (SAMPLING)



### DESCRIPTION

- Distribute gifts and promotional materials right at the parking entrance;
- The contracting of promoters, confection and distribution of materials are the responsibility of the exhibitor.

### QTY

- Quota 1: Entrance with 10 gates;
- Quota 2: Exit with 6 gates;

**QUOTA 1- US\$ 6,050.00**

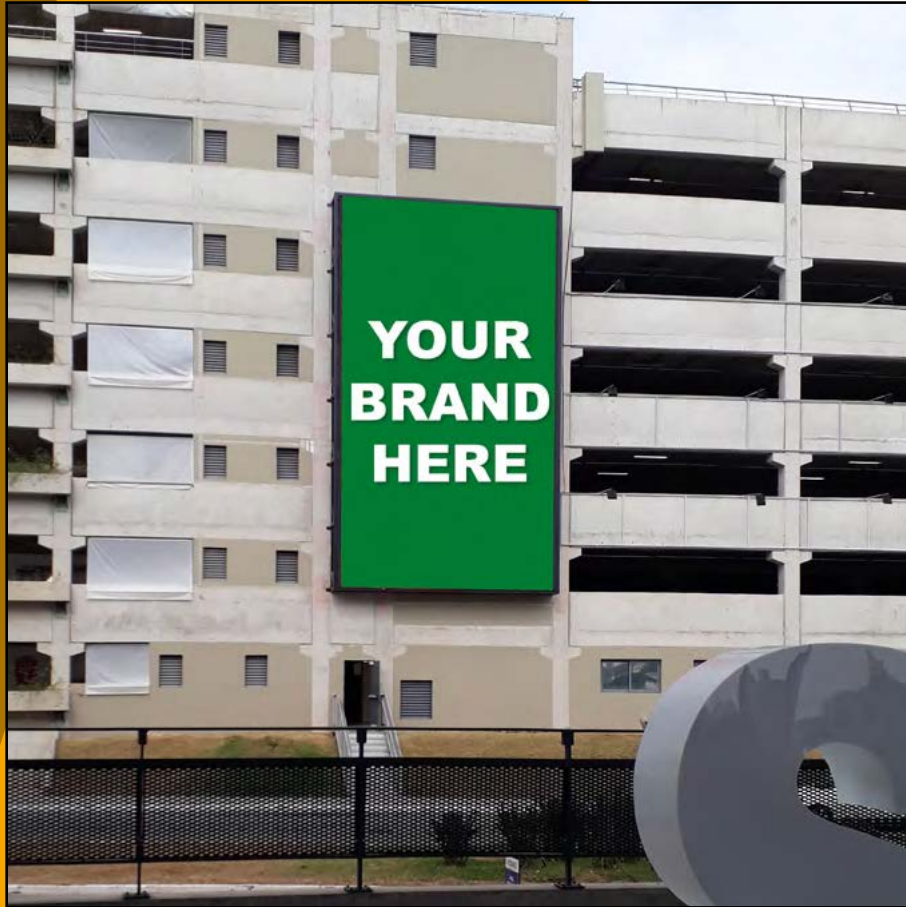
**QUOTA 2- US\$ 3,630.00**

Impact



# ITEM 9

## LED SCREEN



### DESCRIPTION

- Video or image of your brand on the outside the garage building;
- Will be available throughout the fair.

### SPECIFICATIONS

- Measurement: 11x18m (WxH);
- Art Measurement: 672 x 1152 pixels (WxH);
- Time: 10”;
- The exhibitor is responsible for producing the content;

### QTY

- 1 Quota of 10 units;

**US\$ 46,500.00**

1 quota = 1 unit

Impact



# ITEM 10

## MEGA BANNER H

### DESCRIPTION

- Your brand exposed on the outside of the garage building;
- Front.

### SPECIFICATIONS

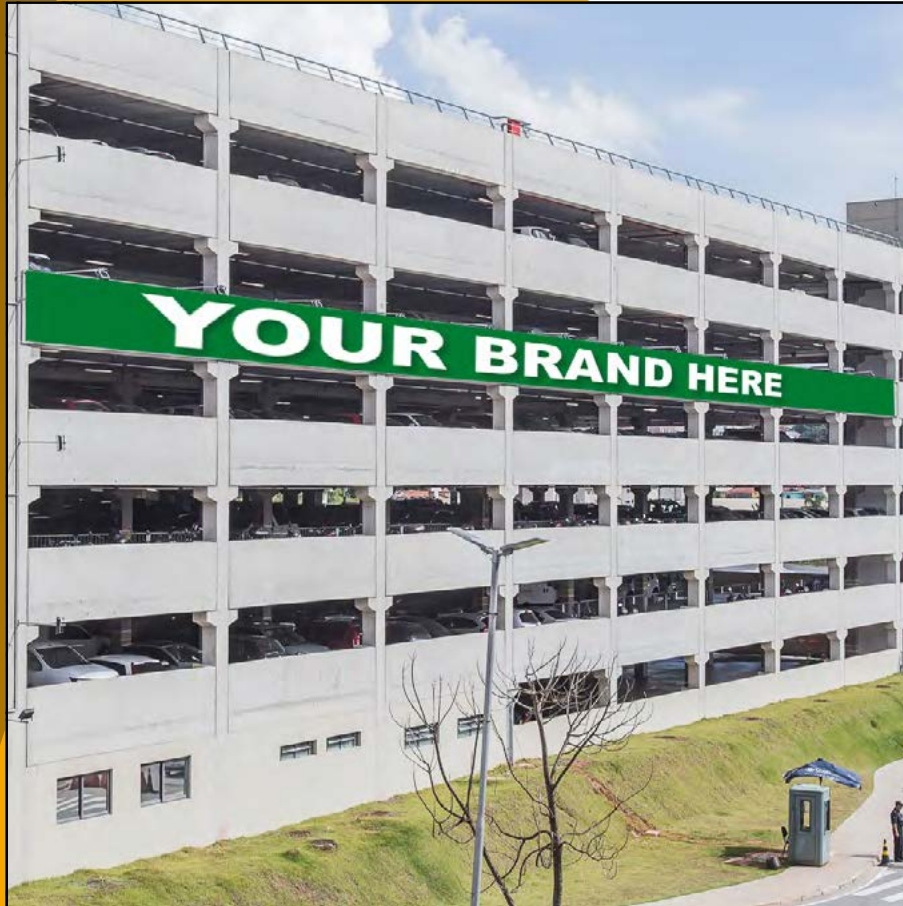
- Measurement: 60x1.60m (WxH);
- Art Measurement: 60x1.60m (WxH);
- PDF or JPG file with 120 dpis in art measurement;
- Printed on canvas and stuck in structure.

### QTY

1 unit;

# US\$ 10,500.00

1 quota = 1 unit



Impact



# PORTFÓLIO FIERA MILANO BRASIL



[www.exposec.com.br](http://www.exposec.com.br)



[www.congressoecoenergy.com.br](http://www.congressoecoenergy.com.br)



[www.feirafisp.com.br](http://www.feirafisp.com.br)



[www.fireshow.com.br](http://www.fireshow.com.br)



[www.reatechbrasil.com.br](http://www.reatechbrasil.com.br)





[www.tubotech.com.br](http://www.tubotech.com.br)



[www.wiresa.com.br](http://www.wiresa.com.br)



Contact:  +55 (11) 5585-4355 / +55 (11) 3159-1010 |  [comercial@fieramilano.com.br](mailto:comercial@fieramilano.com.br)



**FIERA MILANO BRASIL**